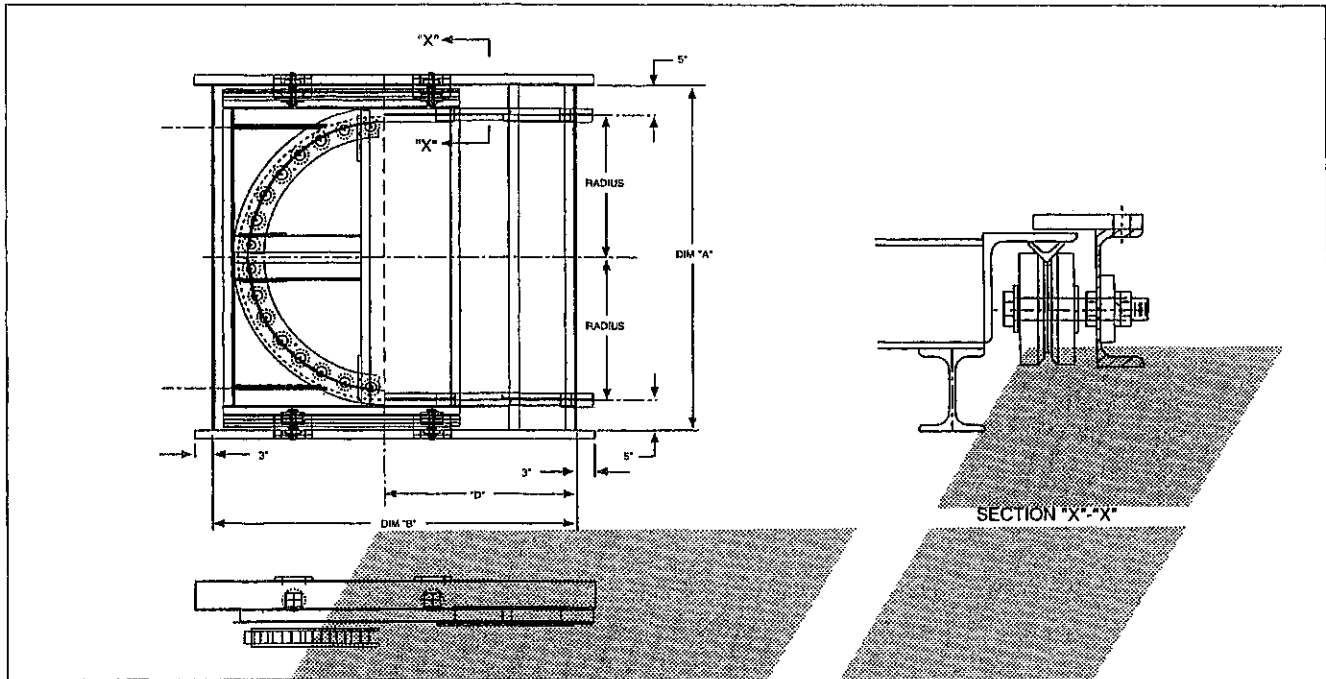


ROLLER TURN TAKE-UP – SPRING OPERATED



2" I, 180 DEG. 6" TRAVEL

ASSEMBLY NO.	RAD.	DIMENSIONS		SLIP JOINT NO.	TURN NO.	TOTAL WT.
		"A"	"B"			
248-1818	18"	3'-10"	4'-1 1/4"	1410-249	263-18	329
248-2418	24"	4'-10"	4'-7 3/4"	"	264-18	365
248-3618	36"	6'-10"	5'-7 3/4"	"	266-18	538
248-4818	48"	8'-10"	6'-7 3/4"	"	268-18	651

RAIL SIZE	DIMENSION "D"		
	8" Travel	16" Travel	24" Travel
3" I	2'-8"	4'-3"	5'-7"
4" I	2'-8"	4'-3"	5'-7"
5" I	2'-8"	4'-3"	5'-7"

3" I, 180 DEG.

ASSEMBLY NO.	RAD.	DIM. "A"	DIMENSION "B"			SLIP JOINT NO.	SPRING NO.	TURN NO.	TOTAL WT.		
			8" Travel	16" Travel	24" Travel				8"	16"	24"
353-18	18"	3'-10"	4'-6 3/8"	6'-1 3/8"	7'-5 3/8"	1410-349	8197	363-18	487	513	539
353-24	24"	4'-10"	5'-0 3/8"	6'-7 3/8"	7'-11 3/8"	"	"	364-18	616	642	668
353-30	30"	5'-10"	5'-6 3/8"	7'-1 3/8"	8'-5 3/8"	"	"	365-18	723	749	775
353-36	36"	6'-10"	6'-0 3/8"	7'-7 3/8"	8'-11 3/8"	"	"	366-18	829	855	881
353-48	48"	8'-10"	7'-0 3/8"	8'-7 3/8"	9'-11 3/8"	"	"	368-18	1043	1069	1095
353-60	60"	10'-10"	8'-0 3/8"	9'-7 3/8"	10'-11 3/8"	"	"	369-18	1306	1332	1358
353-72	72"	12'-10"	9'-0 3/8"	10'-7 3/8"	11'-11 3/8"	"	"	370-18	1427	1453	1479



Rapid Industries, Inc.

DRAWINGS FOR CONCEPT ONLY; NOT FOR ENGINEERING USE

ROLLER TURN TAKE-UP – SPRING OPERATED

4" I, 180 DEG.

ASSEMBLY NO.	RAD.	DIM. "A"	DIMENSION "B"			SLIP JOINT NO.	SPRING NO.	TURN NO.	TOTAL WT.		
			8" Travel	16" Travel	24" Travel				8"	16"	24"
453-18	18"	3'-10"	4'-6 ⁵ / ₈ "	6'-1 ⁵ / ₈ "	7'-5 ⁵ / ₈ "	1410-449	8197	463-18	592	632	670
453-24	24"	4'-10"	5'-0 ⁵ / ₈ "	6'-7 ⁵ / ₈ "	7'-11 ⁵ / ₈ "	"	"	464-18	762	802	840
453-30	30"	5'-10"	5'-6 ⁵ / ₈ "	7'-1 ⁵ / ₈ "	8'-5 ⁵ / ₈ "	"	"	465-18	903	943	981
453-36	36"	6'-10"	6'-0 ⁵ / ₈ "	7'-7 ⁵ / ₈ "	8'-11 ⁵ / ₈ "	"	"	466-18	1040	1080	1118
453-48	48"	8'-10"	7'-0 ⁵ / ₈ "	8'-7 ⁵ / ₈ "	9'-11 ⁵ / ₈ "	"	"	468-18	1314	1354	1392
453-60	60"	10'-10"	8'-0 ⁵ / ₈ "	9'-7 ⁵ / ₈ "	10'-11 ⁵ / ₈ "	"	"	470-18	1588	1628	1666
453-72	72"	12'-10"	9'-0 ⁵ / ₈ "	10'-7 ⁵ / ₈ "	11'-11 ⁵ / ₈ "	"	"	472-18	1862	1902	1940

6" I, 180 DEG. X-458 CHAIN

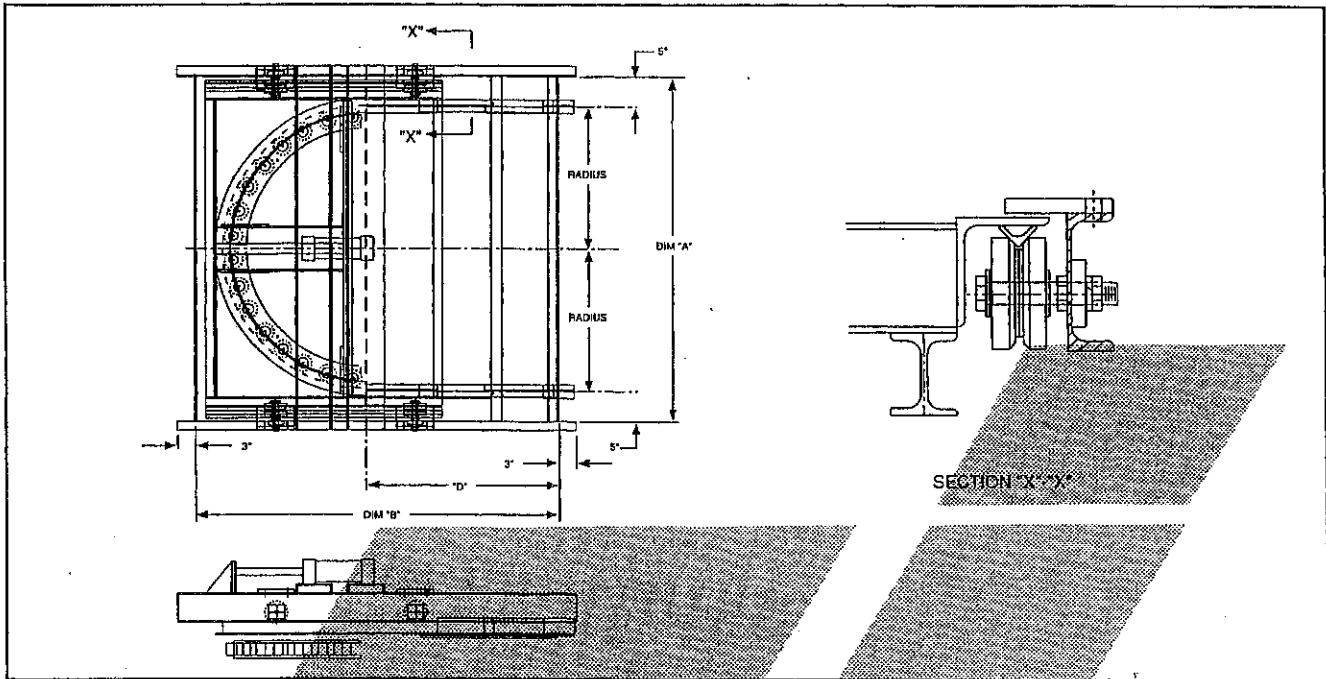
ASSEMBLY NO.	RAD.	DIM. "A"	DIMENSION "B"			SLIP JOINT NO.	SPRING NO.	TURN NO.	TOTAL WT.		
			8" Travel	16" Travel	24" Travel				8"	16"	24"
653-18	18"	3'-10"	4'-7 ¹ / ₄ "	6'-2 ¹ / ₄ "	7'-6 ¹ / ₄ "	1410-649	8197	663-18	647	715	779
653-24	24"	4'-10"	5'-1 ¹ / ₄ "	6'-8 ¹ / ₄ "	8'-0 ¹ / ₄ "	"	"	664-18	831	899	963
653-30	30"	5'-10"	5'-7 ¹ / ₄ "	7'-2 ¹ / ₄ "	8'-6 ¹ / ₄ "	"	"	665-18	976	1044	1108
653-36	36"	6'-10"	6'-1 ¹ / ₄ "	7'-8 ¹ / ₄ "	9'-0 ¹ / ₄ "	"	"	666-18	1121	1189	1253
653-48	48"	8'-10"	7'-1 ¹ / ₄ "	8'-8 ¹ / ₄ "	10'-0 ¹ / ₄ "	"	"	668-18	1412	1480	1544
653-60	60"	10'-10"	8'-1 ¹ / ₄ "	9'-8 ¹ / ₄ "	11'-0 ¹ / ₄ "	"	"	670-18	1704	1772	1836
653-72	72"	12'-10"	9'-1 ¹ / ₄ "	10'-8 ¹ / ₄ "	12'-0 ¹ / ₄ "	"	"	672-18	2018	2086	2150

6" I, 180 DEG. X-678 CHAIN

ASSEMBLY NO.	RAD.	DIM. "A"	DIMENSION "B"			SLIP JOINT NO.	SPRING NO.	TURN NO.	TOTAL WT.		
			8" Travel	16" Travel	24" Travel				8"	16"	24"
6653-18	18"	3'-10"	4'-7 ¹ / ₄ "	6'-2 ¹ / ₄ "	7'-6 ¹ / ₄ "	1410-649	8197	683-18	841	935	1027
6653-24	24"	4'-10"	5'-1 ¹ / ₄ "	6'-8 ¹ / ₄ "	8'-0 ¹ / ₄ "	"	"	6684-18	1080	1174	1266
6653-30	30"	5'-10"	5'-7 ¹ / ₄ "	7'-2 ¹ / ₄ "	8'-6 ¹ / ₄ "	"	"	685-18	1269	1363	1455
6653-36	36"	6'-10"	6'-1 ¹ / ₄ "	7'-8 ¹ / ₄ "	9'-0 ¹ / ₄ "	"	"	686-18	1457	1551	1643
6653-48	48"	8'-10"	7'-1 ¹ / ₄ "	8'-8 ¹ / ₄ "	10'-0 ¹ / ₄ "	"	"	687-18	1836	1930	2022
6653-60	60"	10'-10"	8'-1 ¹ / ₄ "	9'-8 ¹ / ₄ "	11'-0 ¹ / ₄ "	"	"	688-18	2215	2309	2401
6653-72	72"	12'-10"	9'-1 ¹ / ₄ "	10'-8 ¹ / ₄ "	12'-0 ¹ / ₄ "	"	"	689-18	2623	2717	2809



ROLLER TURN TAKE-UP – AIR OPERATED



2" I, 180 DEG. 6" TRAVEL

ASSEMBLY NO.	RAD.	DIMENSIONS		SLIP JOINT NO.	TURN NO.	TOTAL WT.
		"A"	"B"			
256-1818	18"	3'-10"	4'-1 ³ / ₄ "	1410-249	263-18	369
256-2418	24"	4'-10"	4'-7 ¹ / ₄ "	"	264-18	405
256-3618	36"	6'-10"	5'-7 ³ / ₄ "	"	266-18	578
256-4848	48"	8'-10"	6'-7 ³ / ₄ "	"	268-18	691

RAIL SIZE	DIMENSION "D"		
	8" Travel	16" Travel	24" Travel
3" I	2'-8"	4'-3"	5'-7"
4" I	2'-8"	4'-3"	5'-7"
6" I	2'-8"	4'-3"	5'-7"

3" I, 180 DEG.

ASSEMBLY NO.	RAD.	DIM. "A"	DIMENSION "B"			SLIP JOINT NO.	STD. CYL. BORE	TURN NO.	TOTAL WT.		
			8" Travel	16" Travel	24" Travel				8"	16"	24"
356-18	18"	3'-10"	4'-6 ³ / ₈ "	6'-1 ³ / ₈ "	7'-5 ³ / ₈ "	1410-349	6"	363-18	517	543	569
356-24	24"	4'-10"	5'-0 ³ / ₈ "	6'-7 ³ / ₈ "	7'-11 ³ / ₈ "	"	"	364-18	646	672	698
356-30	30"	5'-10"	5'-6 ³ / ₈ "	7'-1 ³ / ₈ "	8'-5 ³ / ₈ "	"	"	365-18	753	779	805
356-36	36"	6'-10"	6'-0 ³ / ₈ "	7'-7 ³ / ₈ "	8'-11 ³ / ₈ "	"	"	366-18	859	885	911
356-48	48"	8'-10"	7'-0 ³ / ₈ "	8'-7 ³ / ₈ "	9'-11 ³ / ₈ "	"	"	368-18	1093	1119	1145



Rapid Industries, Inc.

DRAWINGS FOR CONCEPT ONLY; NOT FOR ENGINEERING USE

ROLLER TURN TAKE-UP – AIR OPERATED

4" I, 180 DEG.

ASSEMBLY NO.	RAD.	DIM. "A"	DIMENSION "B"			SLIP JOINT NO.	STD. CYL. BORE	TURN NO.	TOTAL WT.		
			8" Travel	16" Travel	24" Travel				8"	16"	24"
456-18	18"	3'-10"	4'-6 ⁵ / ₈ "	6'-1 ⁵ / ₈ "	7'-5 ⁵ / ₈ "	1410-449	6"	463-18	642	682	720
456-24	24"	4'-10"	5'-0 ⁵ / ₈ "	6'-7 ⁵ / ₈ "	7'-11 ⁵ / ₈ "	"	"	464-18	815	855	893
456-30	30"	5'-10"	5'-6 ⁵ / ₈ "	7'-1 ⁵ / ₈ "	8'-5 ⁵ / ₈ "	"	"	456-18	953	993	1031
456-36	36"	6'-10"	6'-0 ⁵ / ₈ "	7'-7 ⁵ / ₈ "	8'-11 ⁵ / ₈ "	"	"	466-18	1090	1130	1168
456-48	48"	8'-10"	7'-0 ⁵ / ₈ "	8'-7 ⁵ / ₈ "	9'-11 ⁵ / ₈ "	"	"	468-18	1364	1404	1442
456-60	60"	10'-10"	8'-0 ⁵ / ₈ "	9'-7 ⁵ / ₈ "	10'-11 ⁵ / ₈ "	"	"	470-18	1638	1678	1716
456-72	72"	12'-10"	9'-0 ⁵ / ₈ "	10'-7 ⁵ / ₈ "	11'-11 ⁵ / ₈ "	"	"	472-18	1912	1952	1990

6" I, 180 DEG. X-458 CHAIN

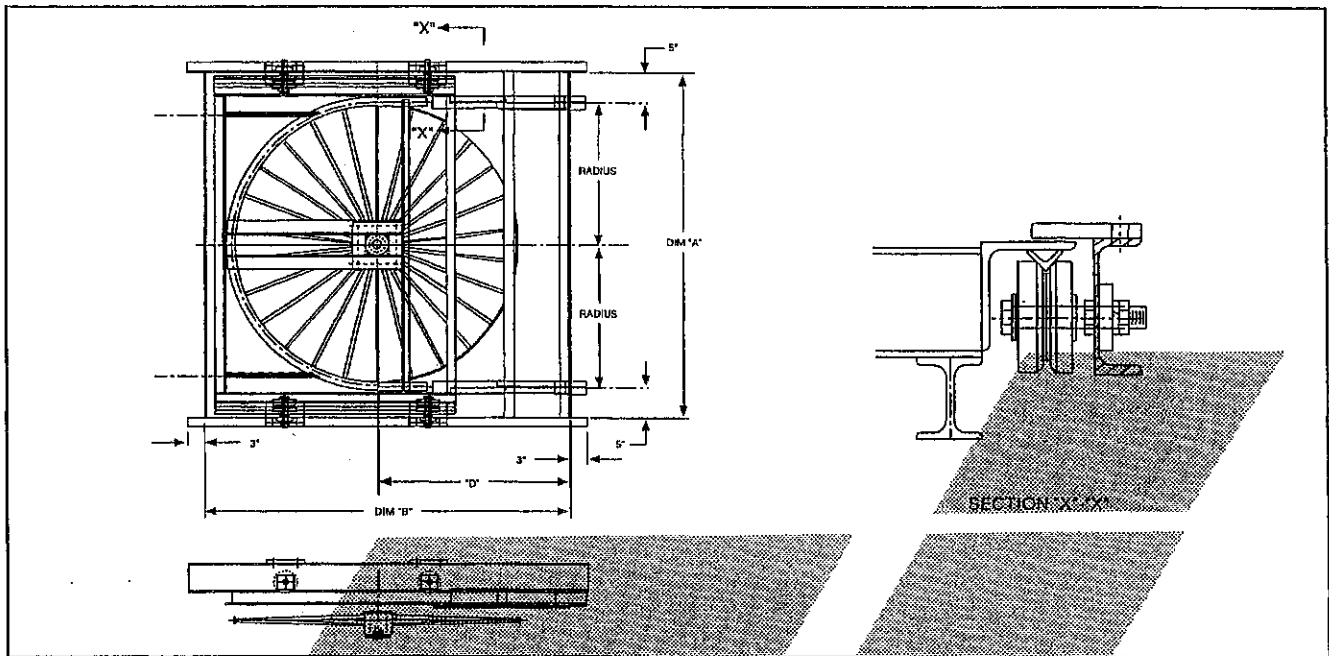
ASSEMBLY NO.	RAD.	DIM. "A"	DIMENSION "B"			SLIP JOINT NO.	STD. CYL. BORE	TURN NO.	TOTAL WT.		
			8" Travel	16" Travel	24" Travel				8"	16"	24"
656-18	18"	3'-10"	4'-7 ¹ / ₄ "	6'-2 ¹ / ₄ "	7'-6 ¹ / ₄ "	1410-649	6"	663-18	697	765	829
656-24	24"	4'-10"	5'-1 ¹ / ₄ "	6'-8 ¹ / ₄ "	8'-0 ¹ / ₄ "	"	"	664-18	881	949	1013
656-30	30"	5'-10"	5'-7 ¹ / ₄ "	7'-2 ¹ / ₄ "	8'-6 ¹ / ₄ "	"	"	665-18	1026	1094	1158
656-36	36"	6'-10"	6'-1 ¹ / ₄ "	7'-8 ¹ / ₄ "	9'-0 ¹ / ₄ "	"	"	666-18	1171	1239	1303
656-48	48"	8'-10"	7'-1 ¹ / ₄ "	8'-8 ¹ / ₄ "	10'-0 ¹ / ₄ "	"	"	668-18	1462	1530	1594
656-60	60"	10'-10"	8'-1 ¹ / ₄ "	9'-8 ¹ / ₄ "	11'-0 ¹ / ₄ "	"	"	670-18	1754	1822	1886
656-72	72"	12'-10"	9'-1 ¹ / ₄ "	10'-8 ¹ / ₄ "	12'-0 ¹ / ₄ "	"	"	672-18	2068	2136	2200

6" I, 180 DEG. X-678 CHAIN

ASSEMBLY NO.	RAD.	DIM. "A"	DIMENSION "B"			SLIP JOINT NO.	STD. CYL. BORE	TURN NO.	TOTAL WT.		
			8" Travel	16" Travel	24" Travel				8"	16"	24"
6656-18	18"	3'-10"	4'-7 ¹ / ₄ "	6'-2 ¹ / ₄ "	7'-6 ¹ / ₄ "	1410-649	6"	683-18	891	985	1077
6656-24	24"	4'-10"	5'-1 ¹ / ₄ "	6'-8 ¹ / ₄ "	8'-0 ¹ / ₄ "	"	"	684-18	1130	1224	1316
6656-30	30"	5'-10"	5'-7 ¹ / ₄ "	7'-2 ¹ / ₄ "	8'-6 ¹ / ₄ "	"	"	685-18	1319	1413	1505
6656-36	36"	6'-10"	6'-1 ¹ / ₄ "	7'-8 ¹ / ₄ "	9'-0 ¹ / ₄ "	"	"	686-18	1507	1601	1693
6656-48	48"	8'-10"	7'-1 ¹ / ₄ "	8'-8 ¹ / ₄ "	10'-0 ¹ / ₄ "	"	"	687-18	1886	1980	2072
6656-60	60"	10'-10"	8'-1 ¹ / ₄ "	9'-8 ¹ / ₄ "	11'-0 ¹ / ₄ "	"	"	688-18	2265	2359	2451
6656-72	72"	12'-10"	9'-1 ¹ / ₄ "	10'-8 ¹ / ₄ "	12'-0 ¹ / ₄ "	"	"	689-18	2673	2767	2859



TRACTION WHEEL TURN TAKE-UP – SPRING OPERATED



2" I, 180 DEG. 6" TRAVEL

ASSEMBLY NO.	P.D.	DIMENSIONS		SLIP JOINT NO.	TURN NO.	TOTAL WT.
		"A"	"B"			
241-2418	24"	2'-10"	3'-7 ³ / ₄ "	"	212-2418	264
241-3018	30"	3'-4"	3'-10 ³ / ₄ "	"	212-3018	289
241-3618	36"	3'-10"	4'-1 ³ / ₄ "	"	212-3619	333
241-4218	42"	4'-4"	4'-4 ³ / ₄ "	"	212-4218	364
241-4818	48"	4'-10"	4'-7 ³ / ₄ "	"	212-4818	406

RAIL SIZE	DIMENSION "D"		
	8" Travel	16" Travel	24" Travel
3" I	2'-8"	4'-3"	5'-7"
4" I	2'-8"	4'-3"	5'-7"
6" I	2'-8"	4'-3"	5'-7"

3" I, 180 DEG.

ASSEMBLY NO.	P.D.	DIM. "A"	DIMENSION "B"			SLIP JOINT NO.	SPRING NO.	TURN NO.	TOTAL WT.		
			8" Travel	16" Travel	24" Travel				8"	16"	24"
351-24	24"	2'-10"	4'-0 ³ / ₈ "	5'-7 ³ / ₈ "	6'-11 ³ / ₈ "	1410-349	8197	312-2418	453	479	505
351-30	30"	3'-4"	4'-3 ³ / ₈ "	5'-10 ³ / ₈ "	7'-2 ³ / ₈ "	"	"	312-3018	512	538	564
351-36	36"	3'-10"	4'-6 ³ / ₈ "	6'-1 ³ / ₈ "	7'-5 ³ / ₈ "	"	"	312-3618	572	598	624
351-42	42"	4'-4"	4'-9 ³ / ₈ "	6'-4 ³ / ₈ "	7'-8 ³ / ₈ "	"	"	312-4218	633	659	685
351-48	48"	4'-10"	5'-0 ³ / ₈ "	6'-7 ³ / ₈ "	7'-11 ³ / ₈ "	"	"	312-4818	687	713	739
351-60	60"	5'-10"	5'-6 ³ / ₈ "	7'-1 ³ / ₈ "	8'-5 ³ / ₈ "	"	"	312-6-18	847	873	899
351-72	72"	6'-10"	6'-0 ³ / ₈ "	7'-7 ³ / ₈ "	8'-11 ³ / ₈ "	"	"	312-7218	969	995	1021



Rapid Industries, Inc.

DRAWINGS FOR CONCEPT ONLY; NOT FOR ENGINEERING USE

TRACTION WHEEL TURN TAKE-UP – SPRING OPERATED

4" I, 180 DEG.

ASSEMBLY NO.	P.D.	DIM. "A"	DIMENSION "B"			SLIP JOINT NO.	SPRING NO.	TURN NO.	TOTAL WT.		
			8" Travel	16" Travel	24" Travel				8"	16"	24"
451-24	24"	2'-10"	4'-0 ⁵ / ₈ "	5'-7 ⁵ / ₈ "	6'-11 ⁵ / ₈ "	1410-449	8197	410-2418	506	546	584
451-30	30"	3'-4"	4'-3 ⁵ / ₈ "	5'-10 ⁵ / ₈ "	7'-2 ⁵ / ₈ "	"	"	410-3018	575	615	653
451-36	36"	3'-10"	4'-6 ⁵ / ₈ "	6'-1 ⁵ / ₈ "	7'-5 ⁵ / ₈ "	"	"	410-3618	650	690	728
451-42	42"	4'-4"	4'-9 ⁵ / ₈ "	6'-4 ⁵ / ₈ "	7'-8 ⁵ / ₈ "	"	"	410-4218	719	759	797
451-48	48"	4'-10"	5'-0 ⁵ / ₈ "	6'-7 ⁵ / ₈ "	7'-11 ⁵ / ₈ "	"	"	410-4818	787	827	865
451-60	60"	5'-10"	5'-6 ⁵ / ₈ "	7'-1 ⁵ / ₈ "	8'-5 ⁵ / ₈ "	"	"	410-6018	937	977	1015
451-72	72"	6'-10"	6'-0 ⁵ / ₈ "	7'-7 ⁵ / ₈ "	8'-11 ⁵ / ₈ "	"	"	410-7218	1077	1117	1155

6" I, 180 DEG. X-458 CHAIN

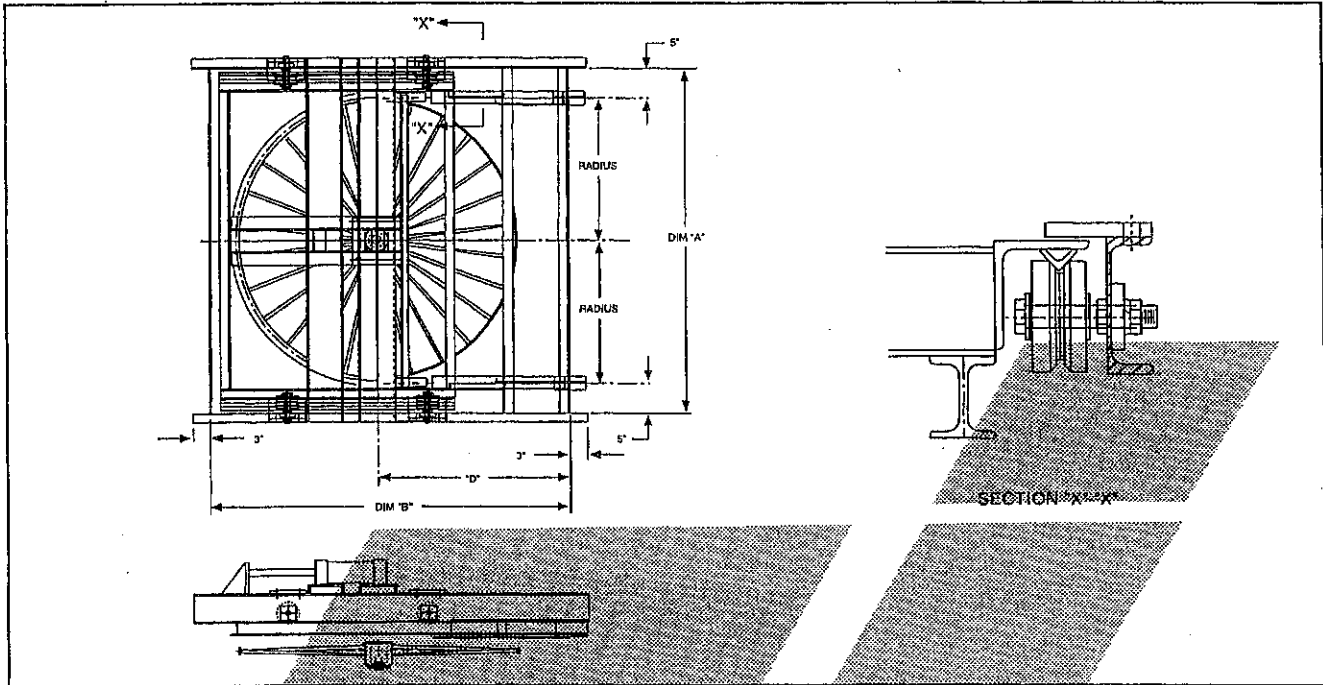
ASSEMBLY NO.	P.D.	DIM. "A"	DIMENSION "B"			SLIP JOINT NO.	SPRING NO.	TURN NO.	TOTAL WT.		
			8" Travel	16" Travel	24" Travel				8"	16"	24"
651-24	24"	2'-10"	4'-1 ¹ / ₄ "	5'-8 ¹ / ₄ "	7'-0 ¹ / ₄ "	1410-649	8197	610-2418	632	700	764
651-30	30"	3'-4"	4'-4 ¹ / ₄ "	5'-11 ¹ / ₄ "	7'-3 ¹ / ₄ "	"	"	610-3018	719	787	851
651-36	36"	3'-10"	4'-7 ¹ / ₄ "	6'-2 ¹ / ₄ "	7'-6 ¹ / ₄ "	"	"	610-3618	813	881	945
651-42	42"	4'-4"	4'-10 ¹ / ₄ "	6'-5 ¹ / ₄ "	7'-9 ¹ / ₄ "	"	"	610-4218	899	967	1031
651-48	48"	4'-10"	5'-1 ¹ / ₄ "	6'-8 ¹ / ₄ "	8'-0 ¹ / ₄ "	"	"	610-4818	984	1052	1116
651-60	60"	5'-10"	5'-7 ¹ / ₄ "	7'-2 ¹ / ₄ "	8'-6 ¹ / ₄ "	"	"	610-6018	1171	1239	1303
651-72	72"	6'-10"	6'-1 ¹ / ₄ "	7'-8 ¹ / ₄ "	9'-0 ¹ / ₄ "	"	"	610-7218	1346	1414	1478

6" I, 180 DEG. X-678 CHAIN

ASSEMBLY NO.	P.D.	DIM. "A"	DIMENSION "B"			SLIP JOINT NO.	SPRING NO.	TURN NO.	TOTAL WT.		
			8" Travel	16" Travel	24" Travel				8"	16"	24"
6651-24	24"	2'-10"	4'-1 ¹ / ₄ "	5'-8 ¹ / ₄ "	7'-0 ¹ / ₄ "	1410-649	8197	613-2418	810	904	996
6651-30	30"	3'-4"	4'-4 ¹ / ₄ "	5'-11 ¹ / ₄ "	7'-3 ¹ / ₄ "	"	"	613-3018	920	1014	1106
6651-36	36"	3'-10"	4'-7 ¹ / ₄ "	6'-2 ¹ / ₄ "	7'-6 ¹ / ₄ "	"	"	613-3618	1040	1134	1226
6651-42	42"	4'-4"	4'-10 ¹ / ₄ "	6'-5 ¹ / ₄ "	7'-9 ¹ / ₄ "	"	"	613-4218	1150	1244	1336
6651-48	48"	4'-10"	5'-1 ¹ / ₄ "	6'-8 ¹ / ₄ "	8'-0 ¹ / ₄ "	"	"	613-4818	1259	1353	1445
6651-60	60"	5'-10"	5'-7 ¹ / ₄ "	7'-2 ¹ / ₄ "	8'-6 ¹ / ₄ "	"	"	613-6018	1499	1593	1685
6651-72	72"	6'-10"	6'-1 ¹ / ₄ "	7'-8 ¹ / ₄ "	9'-0 ¹ / ₄ "	"	"	613-7218	1725	1819	1911



TRACTION WHEEL TURN TAKE-UP – AIR OPERATED



2" I, 180 DEG. 6" TRAVEL

ASSEMBLY NO.	P.D.	DIMENSIONS		SLIP JOINT NO.	TURN NO.	TOTAL W.T.
		"A"	"B"			
254-2418	24"	2'-10"	3'-7 ⁷ / ₈ "	"	212-2418	304
254-3018	30"	3'-4"	3'-10 ³ / ₄ "	"	212-3018	339
254-3618	36"	3'-10"	4'-1 ³ / ₄ "	"	212-3618	373
254-4218	42"	4'-4"	4'-4 ³ / ₄ "	"	212-4218	404
254-4818	48"	4'-10"	4'-7 ³ / ₄ "	"	212-4818	446

RAIL SIZE	DIMENSION "D"		
	8" Travel	16" Travel	24" Travel
3" I	2'-8"	4'-3"	5'-7"
4" I	2'-8"	4'-3"	5'-7"
6" I	2'-8"	4'-3"	5'-7"



3" I, 180 DEG.

ASSEMBLY NO.	P.D.	DIM. "A"	DIMENSION "B"			SLIP JOINT NO.	STD. CYL. BORE	TURN NO.	TOTAL WT.		
			8" Travel	16" Travel	24" Travel				8"	16"	24"
354-24	24"	2'-10"	4'-0 ³ / ₈ "	5'-7 ³ / ₈ "	6'-11 ³ / ₈ "	1410-346	6"	312-2418	512	538	564
354-30	30"	3'-4"	4'-3 ³ / ₈ "	5'-10 ³ / ₈ "	7'-2 ³ / ₈ "	"	"	312-3018	571	597	623
354-36	36"	3'-10"	4'-6 ³ / ₈ "	6'-1 ³ / ₈ "	7'-5 ³ / ₈ "	"	"	312-3618	631	657	683
354-42	42"	4'-4"	4'-9 ³ / ₈ "	6'-4 ³ / ₈ "	7'-8 ³ / ₈ "	"	"	312-4218	692	718	744
354-48	48"	4'-10"	5'-0 ³ / ₈ "	6'-7 ³ / ₈ "	7'-11 ³ / ₈ "	"	"	312-4818	746	772	798
354-60	60"	5'-10"	5'-6 ³ / ₈ "	7'-1 ³ / ₈ "	8'-5 ³ / ₈ "	"	"	312-6018	906	932	958
354-72	72"	6'-10"	6'-0 ³ / ₈ "	7'-7 ³ / ₈ "	8'-11 ³ / ₈ "	"	"	312-7218	1028	1054	1080



Rapid Industries, Inc.

DRAWINGS FOR CONCEPT ONLY; NOT FOR ENGINEERING USE

TRACTION WHEEL TURN TAKE-UP – AIR OPERATED

4" I, 180 DEG.

ASSEMBLY NO.	P.D.	DIM. "A"	DIMENSION "B"			SLIP JOINT NO.	STD. CYL. BORE	TURN NO.	TOTAL WT.		
			8" Travel	16" Travel	24" Travel				8"	16"	24"
454-24	24"	2'-10"	4'-0 ⁵ / ₈ "	5'-7 ⁵ / ₈ "	6'-11 ⁵ / ₈ "	1410-449	6"	410-2418	582	622	660
454-30	30"	3'-4"	4'-3 ⁵ / ₈ "	5'-10 ⁵ / ₈ "	7'-2 ⁵ / ₈ "	"	"	410-3018	655	695	733
454-36	36"	3'-10"	4'-6 ⁵ / ₈ "	6'-1 ⁵ / ₈ "	7'-5 ⁵ / ₈ "	"	"	410-3618	735	775	813
454-42	42"	4'-4"	4'-9 ⁵ / ₈ "	6'-4 ⁵ / ₈ "	7'-8 ⁵ / ₈ "	"	"	410-4218	808	848	886
454-48	48"	4'-10"	5'-0 ⁵ / ₈ "	6'-7 ⁵ / ₈ "	7'-11 ⁵ / ₈ "	"	"	410-4818	880	920	958
454-60	60"	5'-10"	5'-6 ⁵ / ₈ "	7'-1 ⁵ / ₈ "	8'-5 ⁵ / ₈ "	"	"	410-6018	1039	1079	1117
454-72	72"	6'-10"	6'-0 ⁵ / ₈ "	7'-7 ⁵ / ₈ "	8'-11 ⁵ / ₈ "	"	"	410-7218	1188	1228	1266

6" I, 180 DEG. X-458 CHAIN

ASSEMBLY NO.	P.D.	DIM. "A"	DIMENSION "B"			SLIP JOINT NO.	STD. CYL. BORE	TURN NO.	TOTAL WT.		
			8" Travel	16" Travel	24" Travel				8"	16"	24"
654-24	24"	2'-10"	4'-1 ¹ / ₄ "	5'-8 ¹ / ₄ "	7'-0 ¹ / ₄ "	1410-649	6"	610-2418	728	796	860
654-30	30"	3'-4"	4'-4 ¹ / ₄ "	5'-11 ¹ / ₄ "	7'-3 ¹ / ₄ "	"	"	610-3018	819	887	951
654-36	36"	3'-10"	4'-7 ¹ / ₄ "	6'-2 ¹ / ₄ "	7'-6 ¹ / ₄ "	"	"	610-3618	919	987	1051
654-48	42"	4'-4"	4'-10 ¹ / ₄ "	6'-5 ¹ / ₄ "	7'-9 ¹ / ₄ "	"	"	610-4218	1010	1078	1142
654-48	48"	4'-10"	5'-1 ¹ / ₄ "	6'-8 ¹ / ₄ "	8'-0 ¹ / ₄ "	"	"	610-4818	1100	1168	1232
654-60	60"	5'-10"	5'-7 ¹ / ₄ "	7'-2 ¹ / ₄ "	8'-6 ¹ / ₄ "	"	"	610-6-18	1299	1367	1431
654-72	72"	6'-10"	6'-1 ¹ / ₄ "	7'-8 ¹ / ₄ "	9'-0 ¹ / ₄ "	"	"	610-7218	1485	1553	1617

6" I, 180 DEG. X-678 CHAIN

ASSEMBLY NO.	P.D.	DIM. "A"	DIMENSION "B"			SLIP JOINT NO.	STD. CYL. BORE	TURN NO.	TOTAL WT.		
			8" Travel	16" Travel	24" Travel				8"	16"	24"
6654-24	24"	2'-10"	4'-1 ¹ / ₄ "	5'-8 ¹ / ₄ "	7'-0 ¹ / ₄ "	1410-649	6"	613-2418	931	1025	1117
6654-30	30"	3'-4"	4'-4 ¹ / ₄ "	5'-11 ¹ / ₄ "	7'-3 ¹ / ₄ "	"	"	613-3018	1048	1142	1234
6654-36	36"	3'-10"	4'-7 ¹ / ₄ "	6'-2 ¹ / ₄ "	7'-6 ¹ / ₄ "	"	"	613-3618	1176	1220	1362
6654-42	42"	4'-4"	4'-10 ¹ / ₄ "	6'-5 ¹ / ₄ "	7'-9 ¹ / ₄ "	"	"	613-4218	1293	1387	1479
6654-48	48"	4'-10"	5'-1 ¹ / ₄ "	6'-8 ¹ / ₄ "	8'-0 ¹ / ₄ "	"	"	613-4818	1408	1502	1594
6654-60	60"	5'-10"	5'-7 ¹ / ₄ "	7'-2 ¹ / ₄ "	8'-6 ¹ / ₄ "	"	"	613-6018	1662	1756	1848
6654-72	72"	6'-10"	6'-1 ¹ / ₄ "	7'-8 ¹ / ₄ "	9'-0 ¹ / ₄ "	"	"	613-7218	1900	1994	2086