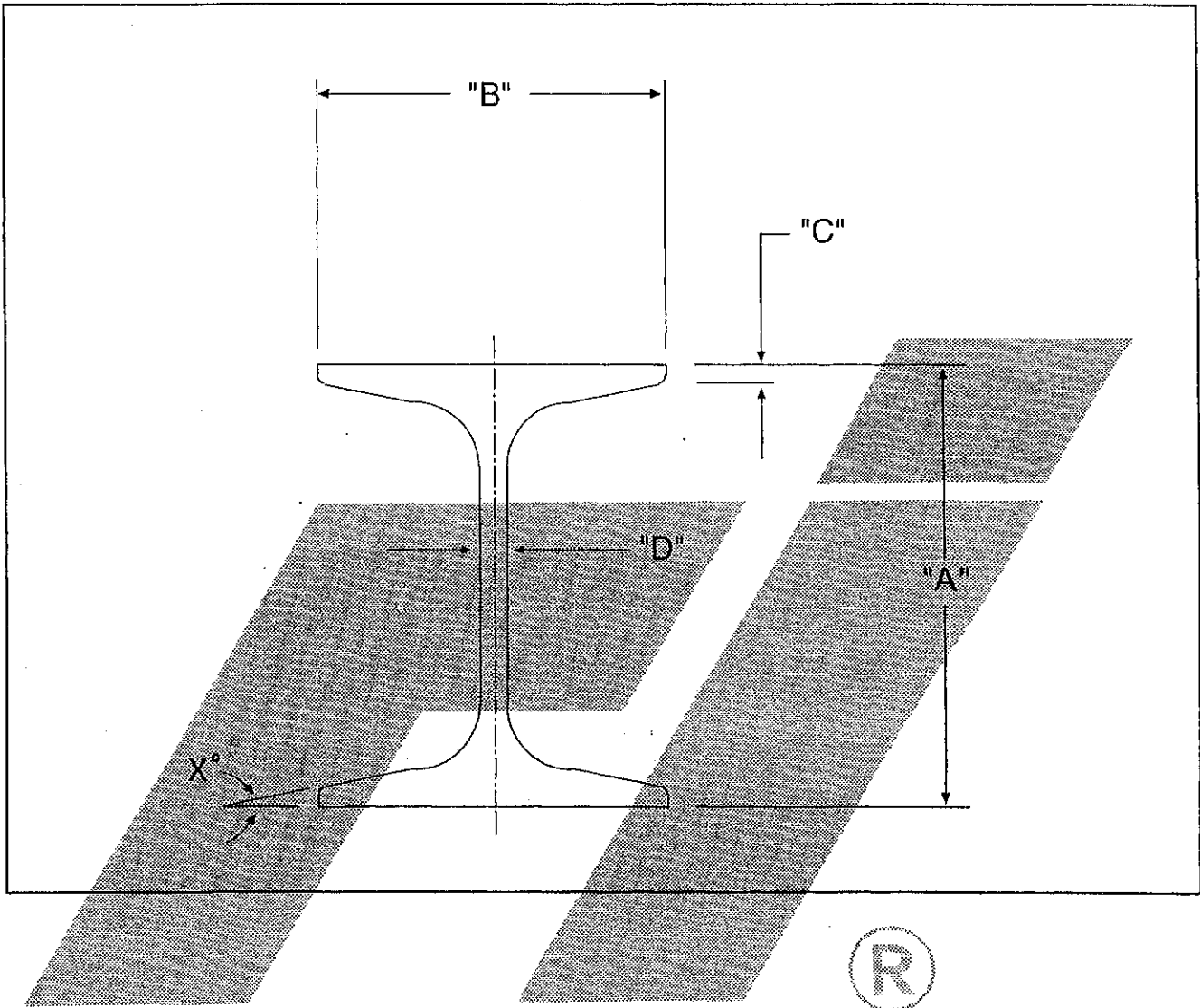


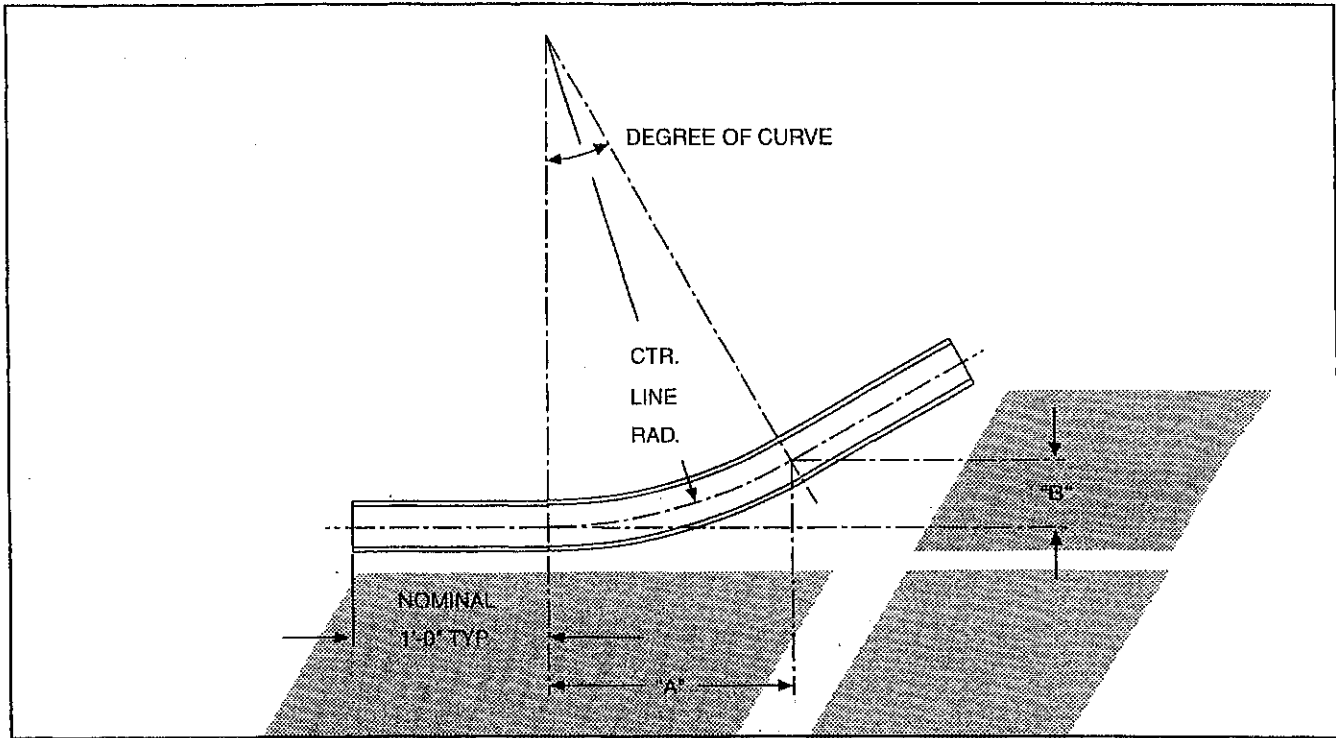
# I-BEAM TRACK SECTIONS



SECTION	WEIGHT PER FOOT	A	B	C	D	X°
3 - I	5.7	3	2.330	$\frac{3}{16}$	$\frac{3}{16}$	$9\frac{1}{2}^\circ$
4 - I	7.7	4	2.660	$\frac{3}{16}$	$\frac{3}{16}$	$9\frac{1}{2}^\circ$
6 - I	12.5	6	3.332	$\frac{1}{4}$	$\frac{1}{4}$	$9\frac{1}{2}^\circ$

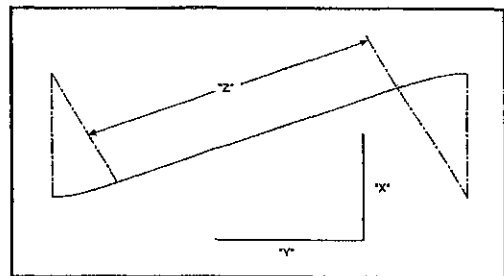


# VERTICAL CURVE DIMENSIONS



CL RAD.	10 DEGREE		15 DEGREE		20 DEGREE		30 DEGREE		45 DEGREE	
	DIM. "A"	DIM. "B"	DIM. "A"	DIM. "B"	DIM. "A"	DIM. "B"	DIM. "A"	DIM. "B"	DIM. "A"	DIM. "B"
4'	0'-8 <sup>3</sup> / <sub>8</sub> "	7/8"	1'-0 <sup>7</sup> / <sub>16</sub> "	1 <sup>5</sup> / <sub>8</sub> "	1'-4 <sup>7</sup> / <sub>16</sub> "	0'-2 <sup>1</sup> / <sub>4</sub> "	2'-0"	0'-6 <sup>7</sup> / <sub>16</sub> "	2'-9 <sup>5</sup> / <sub>16</sub> "	1'-2 <sup>1</sup> / <sub>16</sub> "
5'	0'-10 <sup>3</sup> / <sub>8</sub> "	1 <sup>5</sup> / <sub>16</sub> "	1'-3 <sup>1</sup> / <sub>2</sub> "	2"	1'-8 <sup>9</sup> / <sub>16</sub> "	0'-3 <sup>3</sup> / <sub>8</sub> "	2'-6"	0'-8 <sup>7</sup> / <sub>16</sub> "	3'-6 <sup>7</sup> / <sub>16</sub> "	1'-5 <sup>9</sup> / <sub>16</sub> "
6'	1'-0 <sup>1</sup> / <sub>2</sub> "	1 <sup>1</sup> / <sub>8</sub> "	1'-6 <sup>5</sup> / <sub>8</sub> "	2 <sup>7</sup> / <sub>16</sub> "	2'-0 <sup>5</sup> / <sub>8</sub> "	0'-4 <sup>1</sup> / <sub>2</sub> "	3'-0"	0'-9 <sup>5</sup> / <sub>8</sub> "	4'-2 <sup>1</sup> / <sub>16</sub> "	1'-9 <sup>1</sup> / <sub>16</sub> "
8'	1'-4 <sup>1</sup> / <sub>16</sub> "	1 <sup>1</sup> / <sub>16</sub> "	2'-0 <sup>13</sup> / <sub>16</sub> "	3 <sup>1</sup> / <sub>4</sub> "	2'-8 <sup>13</sup> / <sub>16</sub> "	0'-5 <sup>7</sup> / <sub>16</sub> "	4'-0"	1'-0 <sup>7</sup> / <sub>8</sub> "	5'-7 <sup>7</sup> / <sub>8</sub> "	2'-4 <sup>7</sup> / <sub>8</sub> "
10'	1'-8 <sup>1</sup> / <sub>16</sub> "	1 <sup>9</sup> / <sub>16</sub> "	2'-7 <sup>1</sup> / <sub>16</sub> "	4 <sup>1</sup> / <sub>8</sub> "	3'-5"	0'-7 <sup>1</sup> / <sub>2</sub> "	5'-0"	1'-4 <sup>1</sup> / <sub>16</sub> "	7'-0 <sup>7</sup> / <sub>8</sub> "	2'-11 <sup>1</sup> / <sub>8</sub> "
12'	2'-1"	2 <sup>1</sup> / <sub>16</sub> "	3'-1 <sup>5</sup> / <sub>16</sub> "	4 <sup>15</sup> / <sub>16</sub> "	4'-1 <sup>1</sup> / <sub>4</sub> "	0'-8 <sup>1</sup> / <sub>16</sub> "	6'-0"	1'-7 <sup>3</sup> / <sub>16</sub> "	8'-5 <sup>3</sup> / <sub>16</sub> "	3'-6 <sup>3</sup> / <sub>16</sub> "
15'	2'-7 <sup>1</sup> / <sub>4</sub> "	2 <sup>1</sup> / <sub>4</sub> "	3'-10 <sup>5</sup> / <sub>8</sub> "	6 <sup>5</sup> / <sub>8</sub> "	5'-1 <sup>1</sup> / <sub>4</sub> "	0'-10 <sup>1</sup> / <sub>16</sub> "	7'-6"	2'-0 <sup>1</sup> / <sub>8</sub> "	10'-7 <sup>7</sup> / <sub>32</sub> "	4'-4 <sup>23</sup> / <sub>32</sub> "
20'	3'-5 <sup>1</sup> / <sub>16</sub> "	3 <sup>5</sup> / <sub>8</sub> "	5'-2 <sup>7</sup> / <sub>8</sub> "	8 <sup>3</sup> / <sub>16</sub> "	6'-10 <sup>1</sup> / <sub>16</sub> "	1'-2 <sup>1</sup> / <sub>2</sub> "	10'-0"	2'-8 <sup>5</sup> / <sub>8</sub> "	14'-1 <sup>1</sup> / <sub>16</sub> "	5'-10 <sup>1</sup> / <sub>4</sub> "

DEG. OF INCLINE	DIM. "X"	DIM. "Y"	DIM. "Z"	FOR EACH ADD'L 1" OF RISE, ADD THE FOLLOWING	
				TO DIM. "Y"	TO DIM. "Z"
10°	1'-0"	5'-8 <sup>1</sup> / <sub>16</sub> "	5'-9 <sup>9</sup> / <sub>8</sub> "	5 <sup>1</sup> / <sub>16</sub> "	5 <sup>3</sup> / <sub>4</sub> "
15°	1'-0"	3'-8 <sup>13</sup> / <sub>16</sub> "	3'-10 <sup>3</sup> / <sub>8</sub> "	3 <sup>3</sup> / <sub>4</sub> "	3 <sup>5</sup> / <sub>8</sub> "
20°	1'-0"	2'-9"	2'-11 <sup>1</sup> / <sub>8</sub> "	2 <sup>3</sup> / <sub>4</sub> "	2 <sup>15</sup> / <sub>16</sub> "
30°	1'-0"	1'-8 <sup>13</sup> / <sub>16</sub> "	2'-0"	1 <sup>3</sup> / <sub>4</sub> "	2"
45°	1'-0"	1'-0"	1'-5"	1"	1 <sup>7</sup> / <sub>16</sub> "



Rapid Industries, Inc.

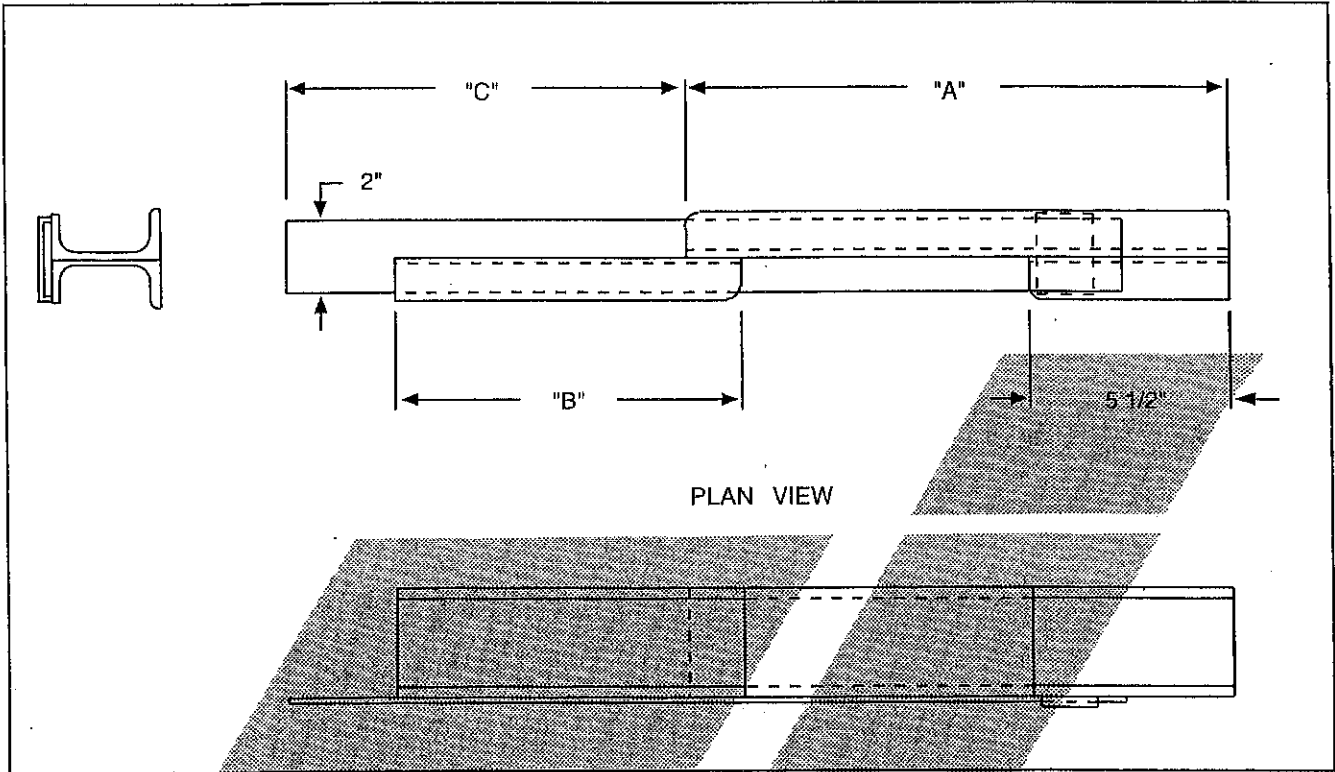
DRAWINGS FOR CONCEPT ONLY; NOT FOR ENGINEERING USE

# 2", 3", 4" & 6" I-BEAM SINGLE VERTICAL CURVES

DEG.	RAD. (FT)	ARC LENGTH	MAT. LENGTH	2" I @ 3.73 LB/FT		3" I @ 5.7 LB/FT		4" I @ 7.7 LB/FT		6" I @ 12.5 LB/FT	
				WT.	PT. NO.	WT.	PT. NO.	WT.	PT. NO.	WT.	PT. NO.
10 DEG.	5	0'-10 $\frac{1}{2}$ "	2'-10 $\frac{1}{2}$ "	11	286-5	16	386-5	--	--	--	--
	6	1'-0 $\frac{9}{16}$ "	3'-0 $\frac{9}{16}$ "	12	286-6	17	386-6	23	486-6	--	--
	8	1'-4 $\frac{3}{4}$ "	3'-4 $\frac{3}{4}$ "	13	286-8	19	386-8	26	486-8	43	686-8
	10	1'-8 $\frac{15}{16}$ "	3'-8 $\frac{15}{16}$ "	14	286-10	21	386-10	29	486-10	47	686-10
	12	2'-1 $\frac{1}{8}$ "	4'-1 $\frac{1}{8}$ "	15	286-12	24	386-12	32	486-12	51	686-12
	15	2'-7 $\frac{7}{16}$ "	4'-7 $\frac{7}{16}$ "	17	286-15	26	386-5	36	486-15	58	686-15
	20	3'-5 $\frac{5}{8}$ "	5'-5 $\frac{5}{8}$ "	21	286-20	31	386-20	42	486-20	69	686-20
15 DEG.	5	1'-3 $\frac{11}{16}$ "	3'-3 $\frac{11}{16}$ "	12	287-5	19	387-5	--	--	--	--
	6	1'-6 $\frac{7}{8}$ "	3'-6 $\frac{7}{8}$ "	13	287-6	20	387-6	28	487-6	--	--
	8	2'-1 $\frac{1}{8}$ "	4'-1 $\frac{1}{8}$ "	15	287-8	23	387-8	32	487-8	51	687-8
	10	2'-7 $\frac{7}{16}$ "	4'-7 $\frac{7}{16}$ "	17	287-10	26	387-10	36	487-10	58	687-10
	12	3'-11 $\frac{11}{16}$ "	5'-11 $\frac{11}{16}$ "	19	287-12	29	387-12	40	487-12	65	687-12
	15	3'-11 $\frac{1}{8}$ "	5'-11 $\frac{1}{8}$ "	22	287-15	34	387-15	46	487-15	74	687-15
	20	5'-2 $\frac{13}{16}$ "	7'-2 $\frac{13}{16}$ "	27	287-20	41	387-20	55	487-20	90	687-20
20 DEG.	5	1'-8 $\frac{15}{16}$ "	3'-8 $\frac{15}{16}$ "	14	288-5	21	388-5	--	--	--	--
	6	2'-1 $\frac{1}{8}$ "	4'-1 $\frac{1}{8}$ "	15	288-6	23	388-6	32	488-6	--	--
	8	2'-9 $\frac{1}{2}$ "	4'-9 $\frac{1}{2}$ "	18	288-8	27	388-8	37	488-8	60	688-8
	10	3'-5 $\frac{5}{8}$ "	5'-5 $\frac{5}{8}$ "	21	288-10	31	388-10	42	488-10	69	688-10
	12	4'-2 $\frac{1}{4}$ "	6'-2 $\frac{1}{4}$ "	23	288-12	35	388-12	48	488-12	77	688-12
	15	5'-2 $\frac{11}{16}$ "	7'-2 $\frac{11}{16}$ "	27	288-15	41	388-15	56	488-15	90	688-15
	20	6'-11 $\frac{1}{2}$ "	8'-11 $\frac{1}{2}$ "	34	288-20	51	388-20	69	488-20	112	688-20
30 DEG.	5	2'-7 $\frac{7}{16}$ "	4'-7 $\frac{7}{16}$ "	17	289-5	26	389-5	--	--	--	--
	6	3'-1 $\frac{1}{16}$ "	5'-1 $\frac{1}{16}$ "	19	289-6	29	389-6	40	489-6	--	--
	8	4'-2 $\frac{1}{4}$ "	6'-2 $\frac{1}{4}$ "	23	289-8	35	389-8	48	489-8	77	689-8
	10	5'-2 $\frac{11}{16}$ "	7'-2 $\frac{11}{16}$ "	27	289-10	41	389-10	56	489-10	90	689-10
	12	6'-3 $\frac{3}{8}$ "	8'-3 $\frac{3}{8}$ "	31	289-12	47	389-12	64	489-12	104	689-12
	15	7'-10 $\frac{1}{4}$ "	9'-10 $\frac{1}{4}$ "	37	289-15	56	389-15	76	489-15	123	689-15
	20	10'-5 $\frac{11}{16}$ "	12'-5 $\frac{11}{16}$ "	46	289-20	71	389-20	96	489-20	156	689-20
45 DEG.	5	3'-11 $\frac{1}{8}$ "	5'-11 $\frac{1}{8}$ "	22	289-5	33	390-5	--	--	--	--
	6	4'-8 $\frac{9}{16}$ "	6'-8 $\frac{9}{16}$ "	25	289-6	38	390-6	52	490-6	--	--
	8	6'-3 $\frac{3}{8}$ "	8'-3 $\frac{3}{8}$ "	31	289-8	47	390-8	64	490-8	104	690-8
	10	7'-10 $\frac{1}{4}$ "	9'-10 $\frac{1}{4}$ "	37	289-10	56	390-10	76	490-10	123	690-10
	12	9'-5 $\frac{5}{8}$ "	11'-5 $\frac{5}{8}$ "	43	289-12	65	390-12	88	490-12	143	690-12
	15	11'-9 $\frac{9}{8}$ "	13'-9 $\frac{9}{8}$ "	51	289-15	79	390-15	106	490-15	172	690-15
	20	15'-8 $\frac{1}{2}$ "	17'-8 $\frac{1}{2}$ "	66	289-20	101	390-20	136	490-20	136	690-20



# TAKE-UP SLIP JOINT 2", 3", 4" & 6" RAIL

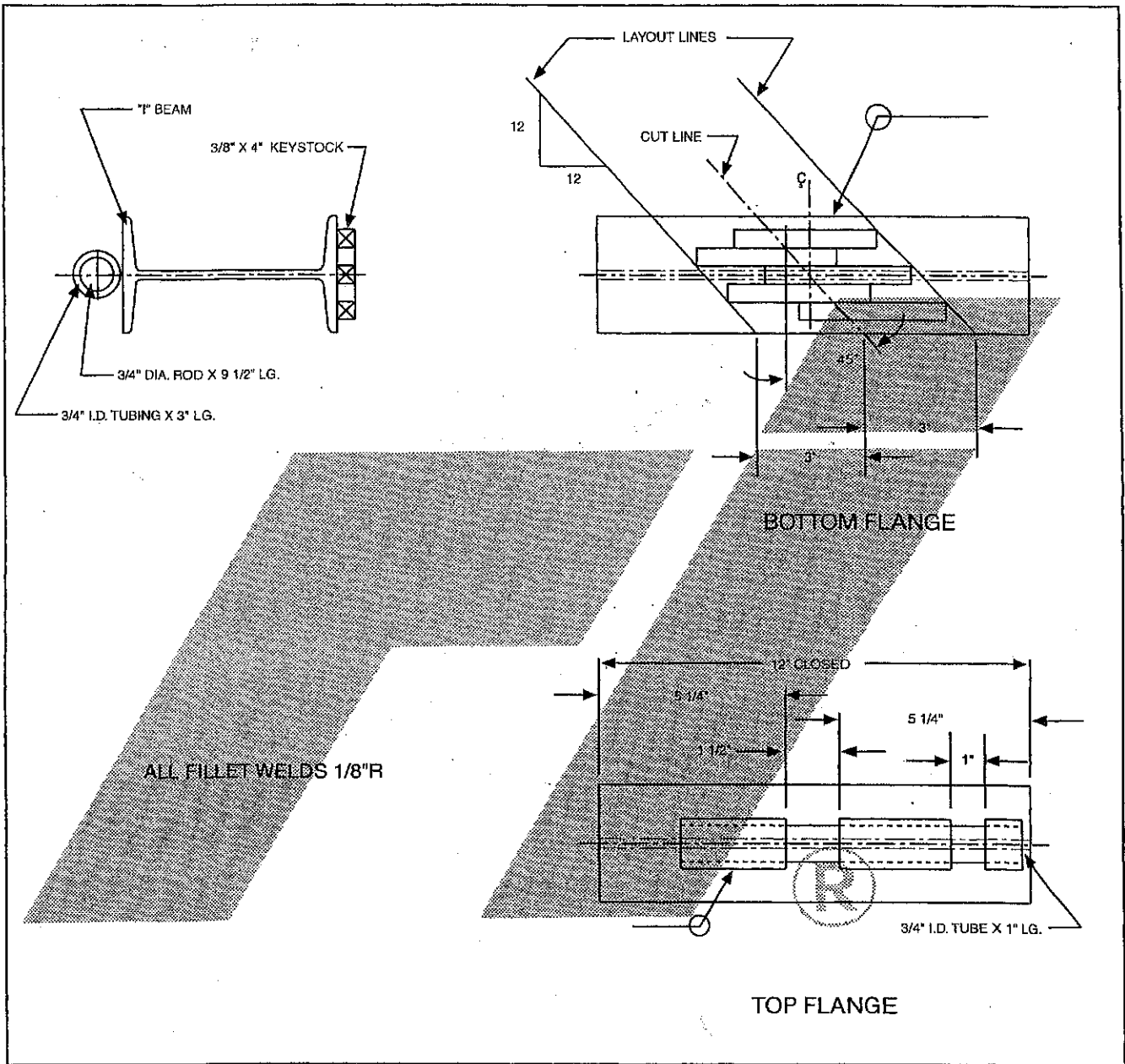


RAIL	TRAVEL	A	B	C	PART
2"	6"	1'-1"	7 1/4"	8"	1410-249
3"	8"	1'-7"	9 1/2"	10"	1410-349 *
4"	8"	1'-7"	9 1/2"	10"	1410-449 *
6"	8"	1'-7"	9 1/2"	10"	1410-649 *

\* PURCHASE ITEM



# OVEN EXPANSION JOINTS 1" MAX. TRAVEL



RAIL SIZE	WEIGHT	ASSEMBLY NUMBER
2"	7#	1403-2
3"	9#	1403-3
4"	12#	1403-4
6"	18#	1403-6

